

Specifications 技术参数

Class RK5 Fuses

Ratings&Features Applications 电气参数/功能应用领域:

- ✧ Volts 电压: 250Vac, 150Vdc;
- ✧ Amps 电流: 1-60A;
- ✧ Interrupting Capacity 分断:
 - IR: 250Vac @ Max 200kA RMS Sym;
 - IR: 150Vdc or 125Vdc @ 50kA;
- ✧ Body: Fiberglass: 管体材质: 玻纤;
- ✧ Current limiting 一种过流保护电路;
- ✧ Service entrance switches 用户引路线开关;
- ✧ Helps protect motors against burnout from overloads 有助于保护电机免受过载烧毁。
- ✧ Provides motor overload, ground fault and short-circuit protection 提供电机过载、接地故障和短路保护;
- ✧ Switchboard mains and feeders 配电板主电源和馈线;
- ✧ Helps protect motors against burnout from single phasing on three-phase systems 有助于保护电动机免受三相系统单相燃尽。
- ✧ Motor control central mains and motor branch circuits 电机控制中心电源和电机分支电路;
- ✧ All general purpose circuits 所有通用电路;

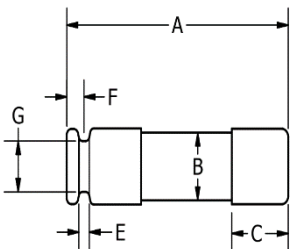
Standards / Approvals 认证/标准:

- ✧ Refer To UL 248.1/UL 248.12
- ✧ 性能参考UL 248.1/UL 248.12
- ✧ Reach Declaration Available Upon Request;
可根据要求提供REACH声明;
- ✧ CE;
- ✧ RoHS Compliant.
符合RoHS。

Features & benefits 产品特性:

Dual-element fuses can be applied in circuits subject to temporary motor overloads and surge currents to provide both high performance short-circuit and overload protection. The overload element provides protection against low-level overcurrent of overloads and will hold an overload which is five times greater than the amp rating of the fuse for a minimum of ten seconds. 双元件熔断器可应用于受临时电机过载和浪涌电流影响的电路中，以提供高性能的短路和过载保护。过载元件对过载的低电平过电流提供保护，并将保持超过保险丝安培额定值5倍的过载至少10秒。

Dimensions (mm) 尺寸



Rated Current	A	B	C	D	E	F	G
	±1mm	±1mm	±0.5mm	±0.5mm	±0.5mm	±0.5mm	±0.5mm
1-30A	50.8	12.7	12.7	14.3	1.8	4.0	9.5
35-60A	76.2	19.2	15.9	20.7	2.4	4.7	15.9

Catalog Numbers (Amps) 物料编号

HCNR xx (xx-Amps)

HCNR01 HCNR02 HCNR03 HCNR04 HCNR05 HCNR06 HCNR07

HCNR08 HCNR09 HCNR10 HCNR12 HCNR15 HCNR20 HCNR25

HCNR30 HCNR35 HCNR40 HCNR45 HCNR50 HCNR60

Dual-Element, Time-Delay – 10 seconds (minimum) at 500% rated current (8 seconds for fuses 30A or less)

Current-Limiting Effects of HCNR Fuses

SHORT CIRCUIT CURRENT*	APPARENT RMS SYMMETRICAL CURRENT FOR VARIOUS FUSE RATINGS	
	30A	60A
5000	1400	2100
10000	1550	2500
15000	2000	3150
20000	2250	3400
25000	2400	3750
30000	2550	4100
35000	2650	4300
40000	2800	4400
50000	3000	5000
60000	3200	5250
80000	3400	5750
100000	3850	6000
150000	4100	7000
200000	4300	7500

*Prospective RMS Symmetrical Amperes Short-Circuit Current. Note: Data Derived from Peak Let-Thru Curves

Time-Current Curve 时间电流曲线图
